

WELLGROW INDUSTRIES CORP.

JIS Flanges



JIS Flanges



BLIND FLANGE

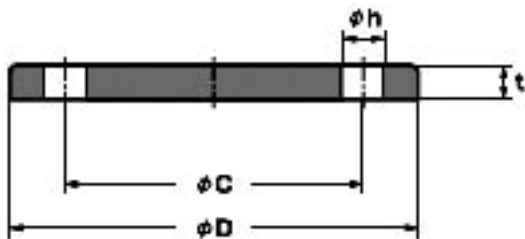


PLATE FLANGE

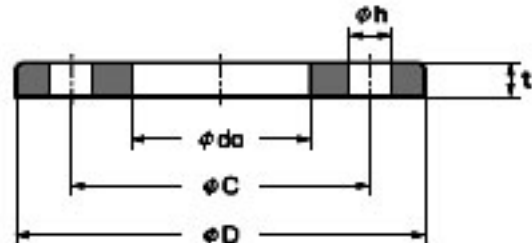


SLIP-ON FLANGE

JIS Flanges 2 kg/cm²



Blind

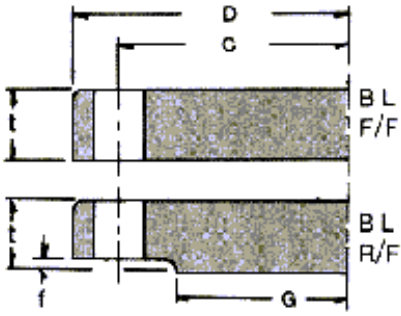


Slip-On

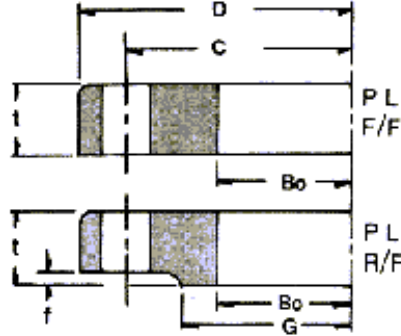
Pipe		Pipe	D	do	t	C	Holes	ψh
inch	mm							
18	450	457.2	605	460	22	555	16	23
20	500	508.0	655	511	22	605	20	23
22	550	558.0	720	562	24	665	20	25
24	600	609.6	770	613	24	715	20	25
26	650	660.4	825	664	24	770	24	25
28	700	711.2	875	715	24	820	24	25
30	750	762.0	945	766	24	880	24	27
32	800	812.8	995	817	24	930	24	27
34	850	863.6	1045	868	24	980	24	27
36	900	914.4	1095	919	24	1030	24	27
40	1000	1016.0	1195	1021	26	1130	28	27
44	1100	1117.6	1305	1122	26	1240	28	27
48	1200	1219.2	1420	1224	26	1350	32	27
54	1350	1371.6	1575	1376	26	1505	32	27
60	1500	1524.0	1730	1529	28	1660	36	27

WELLGROW INDUSTRIES CORP.

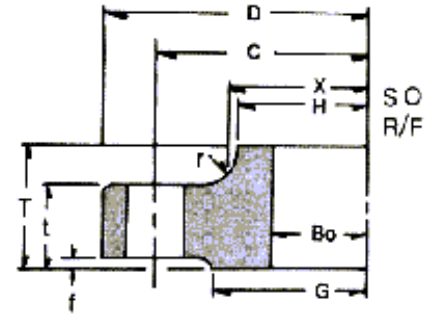
JIS Flanges 5 kg/cm²



Blind



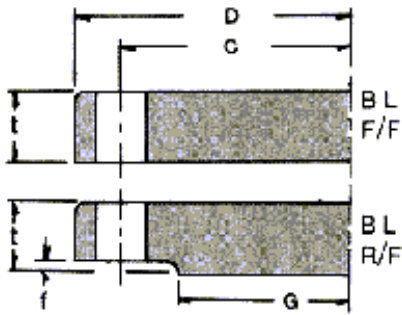
Plate



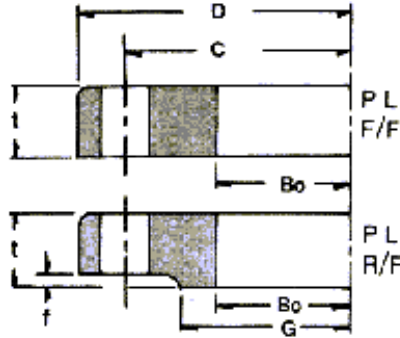
Slip-On

Pipe		Pipe	Bo	D	t	T	G	f	r	H	X	C	Holes	Bolt Dia.		
inch	mm															
3/8	10	17.3	17.8	75	9	-	42	1	-	-	-	55	4	12		
1/2	15	21.7	22.2	80	9	-	48	1	-	-	-	60	4	12		
3/4	20	27.2	27.7	85	10	-	52	1	-	-	-	65	4	12		
1	25	34.0	34.5	95	10	-	62	1	-	-	-	75	4	12		
1-1/4	32	42.7	43.2	115	12	-	72	2	-	-	-	90	4	15		
1-1/2	40	48.6	49.1	120	12	-	78	2	-	-	-	95	4	15		
2	50	60.5	61.1	130	14	-	88	2	-	-	-	105	4	15		
2-1/2	65	76.3	77.1	155	14	-	112	2	-	-	-	130	4	15		
3	80	89.1	90.0	180	14	-	125	2	-	-	-	145	4	19		
3-1/2	90	101.6	102.6	190	14	-	135	2	-	-	-	155	4	19		
4	100	114.3	115.4	200	16	-	145	2	-	-	-	165	8	19		
5	125	139.8	141.2	235	16	-	180	2	-	-	+2.0	200	8	19		
6	150	165.2	166.6	265	18	-	210	2	-	-	-0	230	8	19		
7	175	190.7	192.1	300	18	-	235	2	-	-	-	260	8	23		
8	200	216.3	218.0	320	20	-	255	2	-	-	-	280	8	23		
9	225	241.8	243.7	345	20	-	280	2	-	-	-	305	12	23		
10	250	267.4	269.5	385	22	32	320	2	5	286	290	345	12	23		
12	300	318.5	321.0	430	22	34	365	3	5	338	342	390	12	23		
14	350	355.6	358.1	480	24	36	405	3	5	378	382	435	12	25		
16	400	406.4	409.0	540	24	36	465	3	5	432	436	495	16	25		
18	450	457.2	460.0	605	24	40	525	3	5	495	500	555	16	25		
20	500	508.0	511.0	655	24	40	575	3	5	546	552	605	20	25		
22	550	558.8	562.0	720	26	42	630	3	5	597	603	665	20	27		
24	600	609.6	613.0	770	26	44	680	3	5	648	654	715	20	27		
26	650	660.4	664.0	825	26	48	735	3	5	702	+2.5	708	+2.5	770	24	27
28	700	711.2	715.0	875	26	48	785	3	5	751	-0	758	-0	820	24	27
30	750	762.0	766.0	945	28	52	840	3	5	802	-0	810	-0	880	24	33
32	800	812.8	817.0	995	28	52	890	3	5	854	+3.0	862	+3.0	930	24	33
34	850	863.6	868.0	1045	28	54	940	3	5	904	-0	912	-0	980	24	33
36	900	914.4	919.0	1095	30	56	990	3	5	956	-0	964	-0	1030	24	33
40	1000	1016.0	1021.0	1195	32	60	1090	3	5	1058	+3.5	1066	+3.5	1130	28	33
44	1100	1117.6	1123.0	1305	32	-	1200	3	-	-	-	-	-	1240	28	33
48	1200	1219.2	1224.0	1420	34	-	1305	3	-	-	+3.5	-	+3.5	1350	32	33
54	1350	1371.6	1377.0	1575	34	-	1460	3	-	-	-0	-	-0	1505	32	33
60	1500	1524.0	1529.0	1730	36	-	1615	3	-	-	-	-	-	1660	36	33

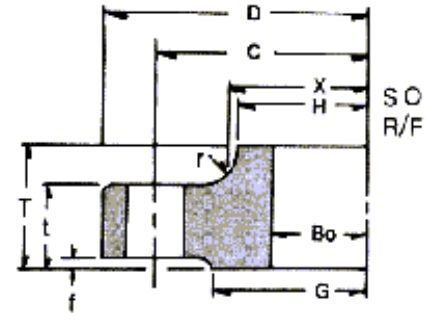
JIS Flanges 10 kg/cm²



Blind



Plate

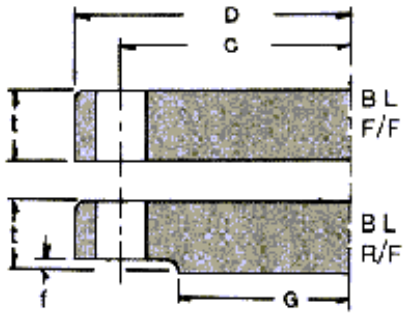


Slip-On

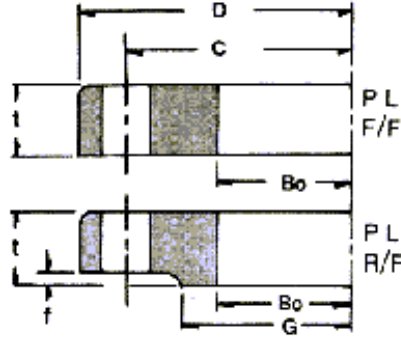
Pipe		Pipe	Bo	D	t	T	G	f	r	H	X	C	Holes	Bolt Dia.
inch	mm													
3/8	10	17.3	17.8	90	12	-	48	1	-	-	-	65	4	15
1/2	15	21.7	22.2	95	12	-	52	1	-	-	-	70	4	15
3/4	20	27.2	27.7	100	14	-	58	1	-	-	-	75	4	15
1	25	34.0	34.5	125	14	-	70	1	-	-	-	90	4	19
1-1/4	32	42.7	43.2	135	16	-	80	2	-	-	-	100	4	19
1-1/2	40	48.6	49.1	140	16	-	85	2	-	-	-	105	4	19
2	50	60.5	61.1	155	16	-	100	2	-	-	-	120	4	19
2-1/2	65	76.3	77.1	175	18	-	120	2	-	-	-	140	4	19
3	80	89.1	90.0	185	18	-	130	2	-	-	-	150	8	19
3-1/2	90	101.6	102.6	195	18	-	140	2	-	-	-	160	8	19
4	100	114.3	115.4	210	18	-	155	2	-	-	-0	175	8	19
5	125	139.8	141.2	250	20	-	185	2	-	-	-	210	8	23
6	150	165.2	166.6	280	22	-	215	2	-	-	-	240	8	23
7	175	190.7	192.1	305	22	32	240	2	6	208	-	265	12	23
8	200	216.3	218.0	330	22	32	265	2	6	234	-	290	12	23
9	225	241.8	243.7	350	22	34	285	2	6	260	-	310	12	23
10	250	267.4	269.5	400	24	36	325	2	6	288	-	355	12	25
12	300	318.5	321.0	445	24	38	370	3	6	340	-	400	16	25
14	350	355.6	358.1	490	26	42	415	3	6	380	-	445	16	25
16	400	406.4	409.0	560	28	44	475	3	6	436	-	510	16	27
18	450	457.2	460.0	620	30	48	530	3	6	496	-	565	20	27
20	500	508.0	511.0	675	30	48	585	3	6	548	+2.0	620	20	27
22	550	558.8	562.0	745	32	52	640	3	6	604	-0	680	20	33
24	600	609.6	613.0	795	32	52	690	3	6	656	-	730	24	33
26	650	660.4	664.0	845	34	56	740	3	6	706	+2.5	780	24	33
28	700	711.2	715.0	905	34	58	800	3	6	762	-0	840	24	33
30	750	762.0	766.0	970	36	62	855	3	6	816	-	900	24	33
32	800	812.8	817.0	1020	36	64	905	3	6	868	-	950	28	33
34	850	863.6	868.0	1070	36	66	955	3	6	920	+3.0	1000	28	33
36	900	914.4	919.0	1120	38	70	1005	3	6	971	-0	979	28	33
40	1000	1016.0	1021.0	1235	40	74	1110	3	6	1073	-	1081	28	39
44	1100	1117.6	1123.0	1345	42	78	1220	3	8	1175	+3.5	1185	28	39
48	1200	1219.2	1224.0	1465	44	82	1325	3	8	1278	-0	1290	32	39
54	1350	1371.6	1377.0	1630	48	88	1480	3	8	1432	-	1450	36	45
60	1500	1524.0	1529.0	1795	50	90	1635	3	8	1585	-	1600	40	45

WELLGROW INDUSTRIES CORP.

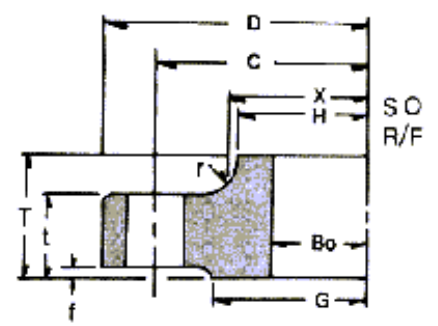
JIS Flanges 16 kg/cm²



Blind



Plate

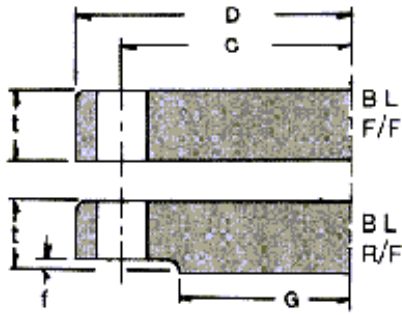


Slip-On

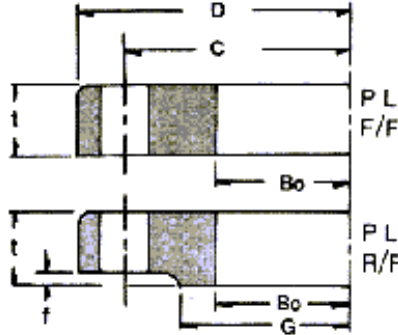
Pipe		Pipe	Bo	D		t	T	G	f	r	H	X	C	Holes	Bolt Dia.
inch	mm														
3/8	10	17.3	17.8	+0.5	90	12	16	±0.8	1	4	26	28	65	4	15
1/2	15	21.7	22.2		95	12	16		52	1	4	30	32	70	4
3/4	20	27.2	27.7	+0.5	100	14	20	±0.8	1	4	38	42	75	4	15
1	25	34.0	34.5		125	14	20		70	1	4	46	50	90	4
1-1/4	32	42.7	43.2	-0	135	16	22	±0.8	2	5	56	60	100	4	19
1-1/2	40	48.6	49.1		140	16	24		85	2	5	62	66	105	4
2	50	60.5	61.1	+1.0	155	16	24	±0.8	2	5	76	80	120	8	19
2-1/2	65	76.3	77.1		175	18	26		120	2	5	94	98	140	8
3	80	89.1	90.0	+1.0	200	20	28	±1.0	2	6	108	112	160	8	23
3-1/2	90	101.6	102.6		210	20	30		145	2	6	120	124	170	8
4	100	114.3	115.4	+1.0	225	22	34	±0.9	2	6	134	138	185	8	23
5	125	139.8	141.2		270	22	34		195	2	6	164	170	225	8
6	150	165.2	166.6	+1.0	305	24	38	±0.9	2	6	196	202	260	12	25
7	175	190.7	192.1		325	26	40		250	2	6	216	222	280	12
8	200	216.3	218.0	-0	350	26	40	±0.9	2	6	244	252	305	12	25
9	225	241.8	243.7		385	26	40		325	2	6	266	272	335	12
10	250	267.4	269.5	+1.5	430	28	44	±0.9	2	6	304	312	380	12	27
12	300	318.5	321.0		480	30	48		395	3	8	354	364	430	16
14	350	355.6	358.1	+1.5	540	34	52	±1.5	3	8	398	408	480	16	33
16	400	406.4	409.0		605	38	60		495	3	10	446	456	540	16
18	450	457.2	460.0	-0	675	40	64	±1.5	3	10	504	514	605	20	33
20	500	508.0	511.0		730	42	68		615	3	10	558	568	660	20
22	550	558.8	562.0	+2.0	795	44	70	±1.0	3	10	612	622	720	20	39
24	600	609.6	613.0		845	46	74		720	3	10	666	676	770	24
26	650	660.4	664.0	+2.0	895	48	77	±1.5	5	10	704	726	820	24	39
28	700	711.2	715.0		960	50	80		820	5	10	754	776	875	24
30	750	762.0	766.0	+2.5	1020	52	83	±1.0	5	10	806	832	935	24	42
32	800	812.8	817.0		1085	54	86		930	5	10	865	885	990	24
34	850	863.6	868.0	-0	1135	56	89	±1.2	5	10	916	936	1040	24	48
36	900	914.4	919.0		1185	58	93		1030	5	10	968	986	1090	28
40	1000	1016.0	1021.0	+2.0	1320	62	99	±1.2	5	12	1070	1098	1210	28	56
44	1100	1117.6	1123.0		1420	66	105		1240	5	12	1180	1200	1310	32
48	1200	1219.2	1225.0	+3.0	1530	70	112	±2.0	5	12	1282	1302	1420	32	56
52	1300	1320.8	1326.0		1645	74	-		1450	5	-	-	-	1530	32
54	1350	1371.6	1377.0	-0	1700	76	-	±2.0	5	-	-	-	1590	32	62
56	1400	1422.4	1428.0		1755	78	-		1560	5	-	-	-	1640	36
60	1500	1524.0	1529.0		1865	80	-		5	-	-	-	1750	36	62

WELLGROW INDUSTRIES CORP.

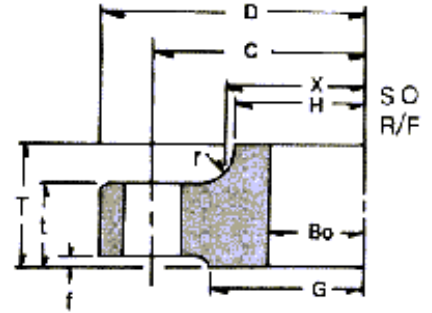
JIS Flanges 20 kg/cm²



Blind



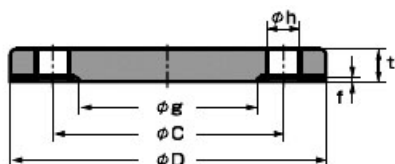
Plate



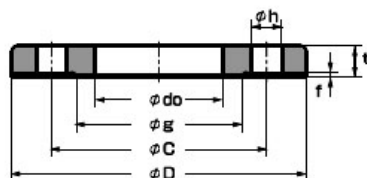
Slip-On

Pipe		Pipe	Bo	D	t	T	G	f	r	H	X	C	Holes	Bolt Dia.
inch	mm													
3/8	10	17.3	17.8	90	14	20	48	1	4	30	32	65	4	15
1/2	15	21.7	22.2	95	14	20	52	1	4	34	36	70	4	15
3/4	20	27.2	27.7	100	16	22	58	1	4	40	42	75	4	15
1	25	34.0	34.5	125	16	24	70	1	4	48	50	90	4	19
1-1/4	32	42.7	43.2	135	18	26	80	2	5	56	60	100	4	19
1-1/2	40	48.6	49.1	140	18	26	85	2	5	62	66	105	4	19
2	50	60.5	61.1	155	18	26	100	2	5	76	80	120	8	19
2-1/2	65	76.3	77.1	175	20	30	120	2	5	100	104	140	8	19
3	80	89.1	90.0	200	22	34	135	2	6	113	117	160	8	23
3-1/2	90	101.6	102.6	210	24	36	145	2	6	126	130	170	8	23
4	100	114.3	115.4	225	24	36	160	2	6	138	142	185	8	23
5	125	139.8	141.2	270	26	40	195	2	6	166	172	225	8	25
6	150	165.2	166.6	305	28	42	230	2	6	196	202	260	12	25
7	175	190.7	192.1	325	30	46	250	2	6	218	226	280	12	25
8	200	216.3	218.0	350	30	46	275	2	6	244	252	305	12	25
9	225	241.8	243.7	385	32	48	300	2	6	266	274	335	12	27
10	250	267.4	269.5	430	34	52	345	2	6	304	312	380	12	27
12	300	318.5	321.0	480	36	56	395	3	8	354	364	430	16	27
14	350	355.6	358.1	540	40	62	440	3	8	398	408	480	16	33
16	400	406.4	409.0	605	46	70	495	3	10	446	456	540	16	33
18	450	457.2	460.0	675	48	78	560	3	10	504	514	605	20	33
20	500	508.0	511.0	730	50	84	615	3	10	558	568	660	20	33
22	550	558.8	562.0	795	52	90	670	3	10	612	622	720	20	39
24	600	609.6	613.0	845	54	96	720	3	10	666	676	770	24	39
26	650	660.4	664.0	945	60	-	790	5	-	-	-	850	24	48
28	700	711.2	715.0	995	64	-	840	5	-	-	-	900	24	48
30	750	762.0	766.0	1080	68	-	900	5	-	-	-	970	24	56
32	800	812.8	817.0	1140	72	-	960	5	-	-	-	1030	24	56
34	850	863.6	868.0	1200	74	-	1020	5	-	-	-	1090	24	56
36	900	914.4	919.0	1250	76	-	1070	5	-	-	-	1140	28	56

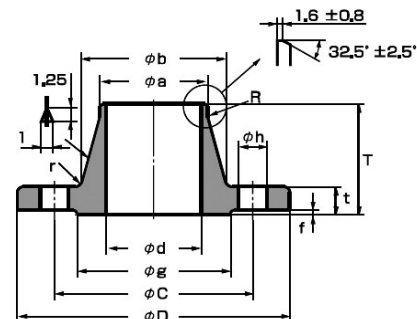
JIS Flanges 30 kg/cm²



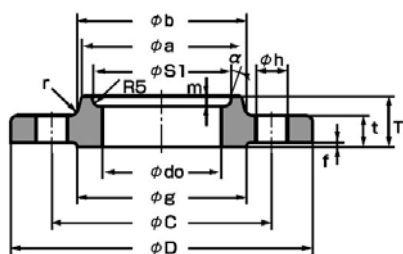
Blind



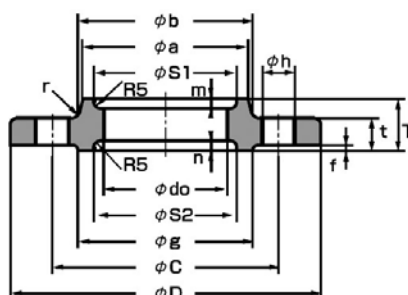
Plate



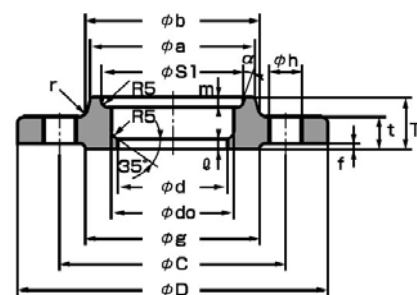
Weld Neck



Slip-On (Type A)



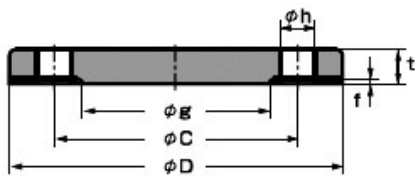
Slip-On (Type B)



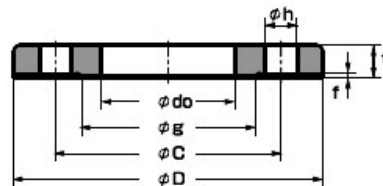
Slip-On (Type C)

Pipe		Pipe	D	t	f	g	C	Holes	h	Plate · Slip-On					Weld Neck					Slip-On Type A · B · C							
inch	Mm									do	T	a	b	r	d	d	a	b	T	R	r	S1	m	S2	n	a	ℓ
3/8	10	17.3	110	16	1	52	75	4	19	17.8	24	30	34	4	-	-	-	-	-	-	-	27	4	27	4	-	-
1/2	15	21.7	115	18	1	55	80	4	19	22.2	26	36	40	5	-	16.1	21.7	40	45	20	6	31	4	40	5	-	-
3/4	20	27.2	120	18	1	60	85	4	19	27.7	28	42	46	5	-	21.4	27.2	44	45	20	6	37	5	44	5	-	-
1	25	34.0	130	20	1	70	95	4	19	34.5	30	50	54	5	-	27.2	34.0	52	48	20	6	44	6	52	5	-	-
1-1/4	32	42.7	140	22	2	80	105	4	19	43.2	32	60	64	6	-	35.5	42.7	62	52	30	6	52	6	60	5	-	-
1-1/2	40	48.6	160	22	2	90	120	4	23	49.1	34	66	70	6	-	41.2	48.6	70	54	30	6	58	6	66	5	-	-
2	50	60.5	165	22	2	105	130	8	19	61.1	36	82	86	6	-	52.7	60.5	84	57	30	8	70	6.5	78	5	-	-
2-1/2	65	76.3	200	26	2	130	160	8	23	77.1	40	102	106	8	65.9	65.9	76.3	104	69	30	8	96	9.5	-	-	20°	6
3	80	89.1	210	28	2	140	170	8	23	90.0	44	115	121	8	78.1	78.1	89.1	118	73	30	8	109	9.5	-	-	20°	6
3-1/2	90	101.6	230	30	2	150	185	8	25	102.6	46	128	134	8	90.2	90.2	101.6	130	74	30	8	122	9.5	-	-	20°	6
4	100	114.3	240	32	2	160	195	8	25	115.4	48	141	147	8	102.3	102.3	114.3	142	76	30	8	135	9.5	-	-	20°	6
5	125	139.8	275	36	2	195	230	8	25	141.2	54	166	172	8	126.6	126.6	139.8	172	86	50	10	160	9.5	-	-	20°	6
6	150	165.2	325	38	2	235	275	12	27	166.6	58	196	204	8	151.0	151.0	165.2	202	95	50	10	186	9.5	-	-	20°	6
8	200	216.3	370	42	2	280	320	12	27	218.0	64	248	256	8	199.9	199.9	216.3	254	102	50	10	237	9.5	-	-	20°	6
10	250	267.4	450	48	2	345	390	12	33	269.5	72	306	314	10	248.8	248.8	267.4	312	118	50	12	290	10	-	-	20°	6
12	300	318.5	515	52	3	405	450	16	33	321.0	78	360	370	10	297.9	297.9	318.5	366	127	50	15	345	12	-	-	30°	6
14	350	355.6	560	54	3	450	495	16	33	358.1	84	402	412	12	333.4	333.4	355.6	406	134	80	15	383	13	-	-	30°	6
16	400	406.4	630	60	3	510	560	16	39	409.0	92	456	468	15	381.0	381.0	406.4	462	149	80	20	435	14	-	-	30°	7

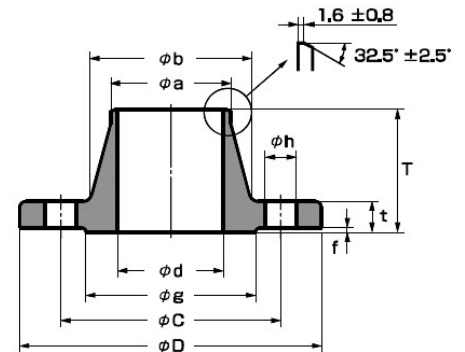
JIS Flanges 40 kg/cm²



Blind



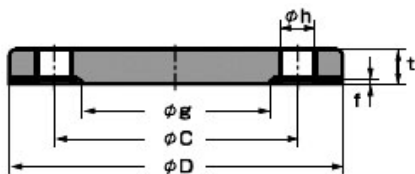
Plate



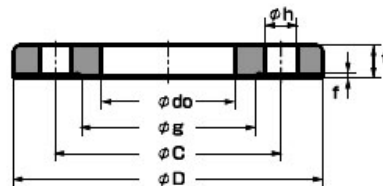
Weld Neck

Pipe		Pipe	D	do	t	f	g	c	Holes	h	Weld Neck			
inch	mm										d	a	b	T
3/8	10	17.3	110	17.8	18	1	52	75	4	19	-	17.3	38	53
1/2	15	21.7	115	22.2	20	1	55	80	4	19	15.8	21.7	40	53
3/4	20	27.2	120	27.7	20	1	60	85	4	19	21.1	27.2	45	58
1	25	34.0	130	34.5	22	1	70	95	4	19	26.8	34.0	54	63
1-1/4	32	42.7	140	43.2	24	2	80	105	4	19	35.1	42.7	62	69
1-1/2	40	48.6	160	49.1	24	2	90	120	4	23	40.7	48.6	72	72
2	50	60.5	165	61.1	26	2	105	130	8	19	52.2	60.5	88	75
2-1/2	65	76.3	200	77.1	30	2	130	160	8	23	65.3	76.3	108	81
3	80	89.1	210	90.0	32	2	140	170	8	23	76.4	89.1	119	85
3-1/2	90	101.6	230	102.6	34	2	150	185	8	25	89.5	101.6	130	88
4	100	114.3	250	115.4	36	2	165	205	8	25	101.5	114.3	146	104
5	125	139.8	300	141.2	40	2	200	250	8	27	-	-	-	-
6	150	165.2	355	166.6	44	2	240	295	12	33	150.0	165.2	215	120
8	200	216.3	405	218.0	50	2	290	345	12	33	198.7	216.3	270	135
10	250	267.4	475	269.5	56	2	355	410	12	33	247.5	267.4	333	154
12	300	318.5	540	321.0	60	2	410	470	16	39	296.4	318.5	400	159
14	350	355.6	585	358.1	64	3	455	515	16	39	331.8	355.6	432	168
16	400	406.4	645	409.0	70	3	515	570	16	39	379.1	406.4	466	181

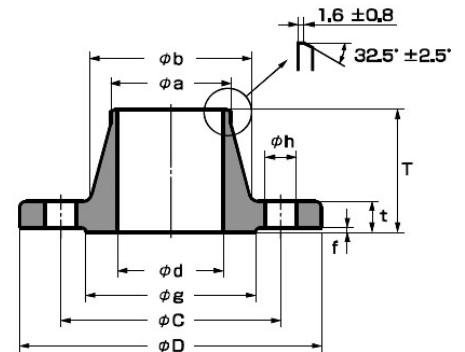
JIS Flanges 63 kg/cm²



Blind



Plate



Weld Neck

Pipe		Pipe	D	do	t	F	g	c	Holes	h	Weld Neck			
inch	mm										d	a	b	T
3/8	10	17.3	115	17.8	23	1	52	80	4	19	-	17.3	40	61
1/2	15	21.7	120	22.2	23	1	55	85	4	19	15.8	21.7	42	61
3/4	20	27.2	135	27.7	25	1	60	95	4	23	21.1	27.2	46	71
1	25	34.0	140	34.5	27	1	70	100	4	23	26.8	34.0	56	74
1-1/4	32	42.7	150	43.2	30	2	80	110	4	23	35.1	42.7	60	75
1-1/2	40	48.6	175	49.1	32	2	90	130	4	25	40.7	48.6	75	85
2	50	60.5	185	61.1	34	2	105	145	8	25	52.2	60.5	92	104
2-1/2	65	76.3	220	77.1	38	2	130	175	8	25	65.3	76.3	118	107
3	80	89.1	230	90.0	40	2	140	185	8	25	76.4	89.1	130	120
3-1/2	90	101.6	255	102.6	42	2	150	205	8	27	89.5	101.6	140	126
4	100	114.3	270	115.4	44	2	165	220	8	27	101.5	114.3	154	126
5	125	139.8	325	141.2	50	2	200	265	8	33	-	-	-	-
6	150	165.2	365	166.6	54	2	240	305	12	33	150.0	165.2	230	173
8	200	216.3	425	218.0	60	2	290	360	12	33	198.7	216.3	280	215
10	250	267.4	500	269.5	68	2	355	430	12	39	247.5	267.4	348	256
12	300	318.5	560	321.0	77	3	410	485	16	39	296.4	318.5	402	286
14	350	355.6	615	358.1	81	3	455	530	16	46	331.8	355.6	438	301
16	400	406.4	680	409.0	89	3	515	590	16	46	379.1	406.4	490	314